

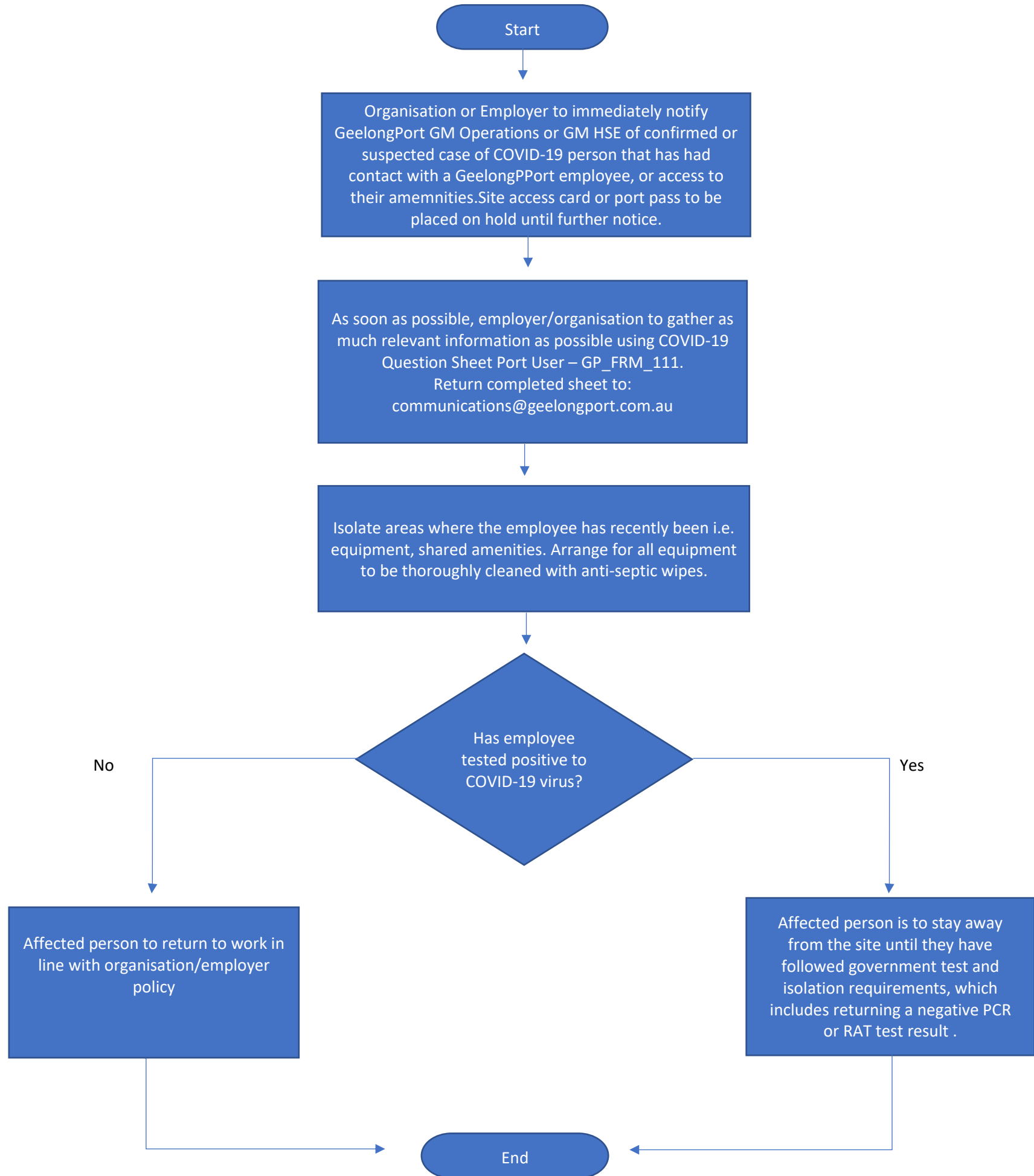
COVID-19 Port User Notification Process for Geelong Port

1 PROCESS

This process is to be used when a GeelongPort Port User informs their organisation or employer that they have:

- A. Been diagnosed with the coronavirus who has been in direct contact with a GeelongPort employee or has used GeelongPort's employee amenities.

1.1 PORT USER REPORTING PROCESS FLOW CHART



1.2 REFERENCE

GP_FRM_111 COVID-19 Question Sheet Port User