

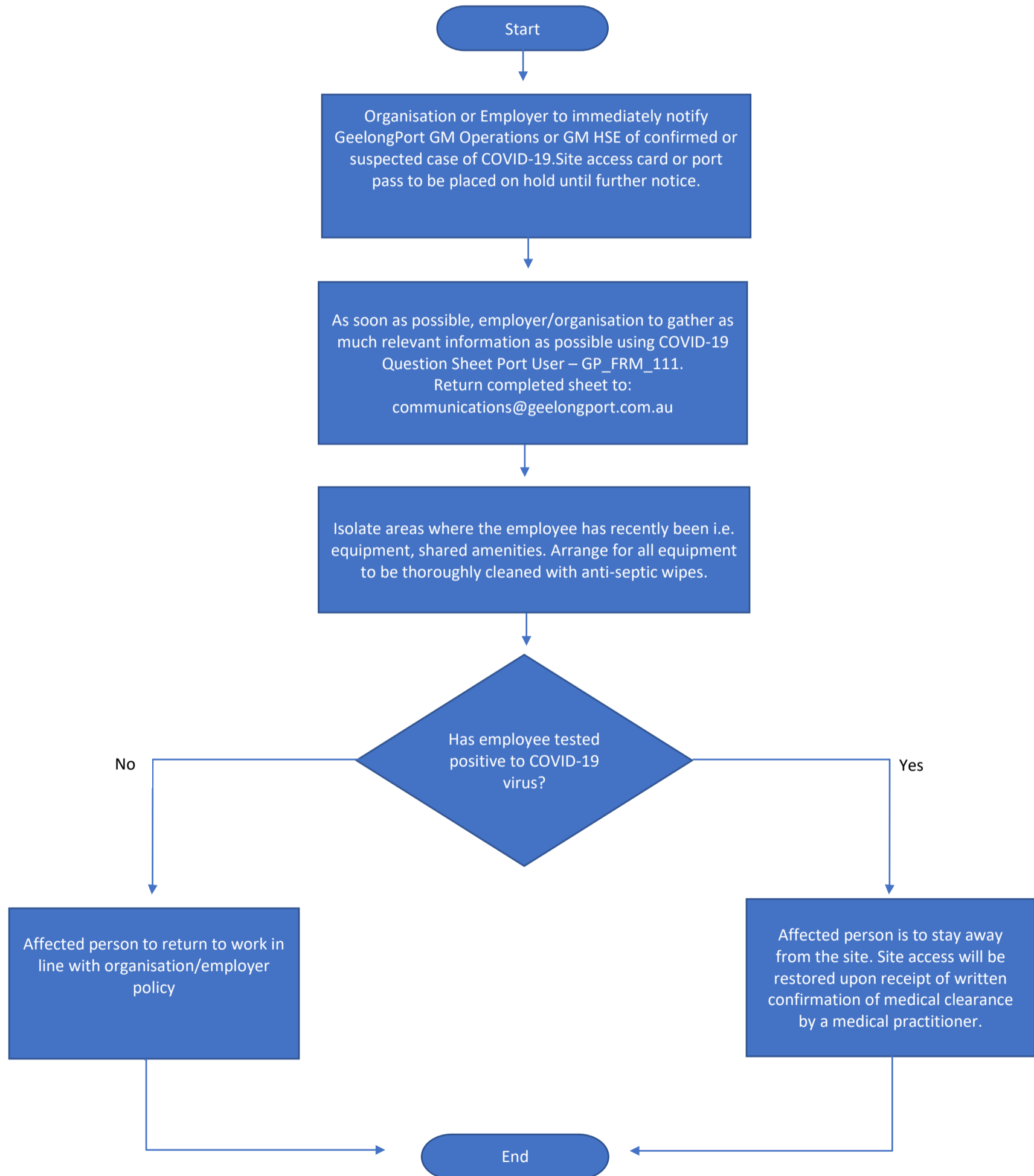
COVID-19 Port User Notification Process for GeelongPort

1 PROCESS

This process is to be used when a GeelongPort Port User informs their organisation or employer that they have:

- A. Been diagnosed with the coronavirus
- B. Been in contact with someone diagnosed with the coronavirus
- C. Recently returned or been in contact with someone from a country that has been deemed high or medium risk by the Australian Government (www.health.gov.au)
- D. Experiencing symptoms of:
 - o fever \geq 38 degrees
 - o Acute respiratory infection such as coughing, sore throat or shortness of breath

1.1 PORT USER REPORTING PROCESS FLOW CHART



1.2 REFERENCE

GP_FRM_111 COVID-19 Question Sheet Port User