

GeelongPort

ECOPORTS

Port Environmental

Review System

Report 2020



EXECUTIVE SUMMARY

The EcoPorts Port Environmental Review System (PERS) is a program designed to assist ports to implement an environmental management program that aligns with the recommendations of the European Sea Ports Organisation (ESPO), guidelines of other national port associations, guidelines of national governments and of other international organisations such as the United Nations. PERS incorporates the main generic requirements of ISO14001:2015, to which GeelongPort is certified. However, PERS is adapted to deliver effective and specific port environmental management, and its implementation is independently certified by Lloyd's Register.

PERS is based on an internationally recognised best practice approach and is a port specific system developed by ports for ports. It is formulated to be flexible and capable of evolution so it can be adapted to future changes in legislation and priorities for action. The system defines a basic standard of good practice for the port sector. The purpose of PERS is to assist ports to achieve the objectives of sustainable development and environmental protection, which is in alignment with the GeelongPort environmental vision to become Australia's most environmentally sustainable bulk port.

The three main objectives of PERS include:

1. Assisting ports in the preparation of an annual **environmental report**
2. Establishing a **benchmark standard** of environmental review for the port sector, by using unified methodology
3. Encouraging ports to actively engage in the global network of EcoPorts PERS certified ports by contributing and **sharing knowledge**

This EcoPorts PERS Report is the inaugural report for GeelongPort and documents the sustainable development and environmental protection activities implemented by the Port, including:

- Environmental policy
- Environmental aspects and legislative requirements
- Environmental responsibilities and resources
- Conformity review
- 2020 Environment Report
- Best practice activities

This report will also be used to apply for the PERS Certificate of Verification, independently assessed by Lloyds Register, Rotterdam.

TABLE OF CONTENTS

1.0	Port Profile	4
1.0.1	Port Location and Port Area	4
1.0.2	Main Cargoes	6
1.0.3	Environmental Management.....	6
1.1	Policy Statement	8
1.1.1	GeelongPort Environment Policy	8
1.2	Environmental Aspects and Legal Requirements	10
1.2.1	Environmental Aspects.....	10
1.2.2	Legal and Other Requirements.....	10
1.2.3	Environmental Aspect and Impact Register	12
1.2.4	Environmental Performance Indicators.....	16
1.3	Responsibilities and Resources	17
1.3.1	GeelongPort Environmental Responsibility.....	17
1.3.2	Environmental Training and Awareness	20
1.3.3	Environmental Resource Allocation.....	20
1.4	Conformity Review	21
1.4.1	Review of Environmental Performance.....	22
1.4.2	Review of Compliance with Environmental Legislation	23
1.4.3	Priorities for Improvement	24
1.5	Environment Report.....	25
1.5.1	Environmental Performance FY21.....	25
1.5.2	Port Stakeholder Needs, Expectations and Engagement	26
1.6	Best Practices	27
1.7	Contact Information	29

1.0 Port Profile

1.0.1 Port Location and Port Area

GeelongPort is located on the shores of Corio Bay (Figure 1). The natural environments of this area, particularly around North Shore where GeelongPort facilities are situated, have been modified to various extents by a long history of industrial and commercial activities. However, Corio Bay remains representative of a diverse range of environmentally sensitive features that must be appropriately protected and managed.

Corio Bay is also enjoyed by the local community and a large number of tourists visit the City of Greater Geelong each year for recreational activities which include boating, sailing, fishing, diving, swimming, cycling, camping, walking, site-seeing and waterfront dining.



Figure 1: Physical Location of GeelongPort on the shores of Corio Bay

GeelongPort wharf and pier related assets include the following:

- Refinery Pier - Refinery Pier has four berths for the supply of petroleum and chemical products and the importation of crude oil feedstock for the Viva Energy Geelong Refinery operations which provide for approximately 50 per cent of Victoria's fuel supplies. Approximately 80 per cent of the Refinery's crude oil feedstock is provided through shipping, and accounts for over 50 per cent of the total commodity volumes shipped through the Port.
- Lascelles Wharf - Lascelles Wharf has three berths with key facilities including: cargo grabbing cranes (primarily for dry bulk handling, including fertiliser and soybean meal); hopper and conveyor systems; truck-loading stations and storage buildings; and an acid receipt and pumping system used for fertiliser production. Lascelles Wharf is one of the largest fertiliser wharfs in Australia and receives fertiliser as a raw or processed product for distribution to a range of businesses. Fertiliser is trucked directly from the wharf to off-site storage centres. Gypsum, calcite and clinker are also handled at Lascelles Wharf.
- Corio Quay - Corio Quay facilities include two wharves (North and South) with five berths, bulk loader, hardstand areas and storage sheds. The bulk loader is utilised for the loading of woodchips at Corio Quay North for export. Corio Quay South receives general cargo and steel from break bulk ships. The storage sheds and hard stand areas are used for the transfer of steel and other break bulk trade. Corio Quay can also be used for project works and layups.
- Bulk Grain Pier - Svitzer currently lease Bulk Grain Pier for towage related services to support Geelong related shipping.
- Point Henry Pier - Alcoa of Australia closed the Point Henry smelter in 2014. Since this time Point Henry Pier has been utilised as a lay-up berth.
- Approximately 95 hectares of port-zoned land predominantly located around Oyster Cove.

1.0.2 Main Cargoes

GeelongPort handles a diverse range of cargo types, including woodchips, bulk liquids, clinker, calcite, gypsum, soybean meal, phosphate rock, finished fertiliser products and project cargo.

1.0.3 Environmental Management

The Environmental Strategy (the Strategy) outlines GeelongPort's strategic direction and commitment to responsible and sustainable environmental management while maintaining a focus on continual improvement. The Strategy has been specifically prepared for GeelongPort owned and managed facilities.

While some aspects of the Strategy present new and challenging commitments for GeelongPort and Port users, they mostly compliment and build upon already existing systems and processes that have been effective from a regulatory compliance and business perspective.

Importantly, as GeelongPort trade increases and new activities develop into the future, the Strategy aims to establish more comprehensive baseline of information and data in key areas such as water quality, air emissions and environmental sustainability. This additional information and data will be used to measure and benchmark continual improvements in environmental performance and outcomes across all GeelongPort managed facilities.

The GeelongPort Environmental Management System is certified to ISO14001:2015 and is underpinned by an Environmental Management Plan and specific operational procedures designed to mitigate environmental impacts and ensure compliance with applicable environmental legislation.

The objectives of the GeelongPort Environmental Management System are to:

- Provide a framework allowing for the identification of environmental compliance requirements
- Ensure environmental responsibilities are met or exceeded
- Identify environmental roles, responsibilities and authorities to allow the business to deliver on environmental commitments

- Allow for the identification and management of significant environmental aspects
- Establish processes for the establishment, achievement and review of environmental objectives
- Ensure emergency preparedness and response processes are in place, tested, reviewed to confirm that the processes are carried out as planned
- Integrate continual improvement activities into business processes

1.1 Policy Statement

1.1.1 GeelongPort Environment Policy



The Environmental Vision of GeelongPort is to become Australia's most environmentally sustainable bulk port.

GeelongPort is committed to conducting business activities in a way that protects the environment, prevents pollution, minimises adverse environmental impacts and delivers continual improvement in environmental performance. We will ensure environmental responsibility remains at the core of our business approach.

Given the significant economic and employment impact of the Port of Geelong, GeelongPort has:

- An obligation to the Geelong region and to Victoria to continually improve the sustainability of our operations;
- A responsibility to understand and manage our environmental values;
- A duty to cooperate with our neighbours, community, industry groups and government; and
- An opportunity to lead environmental progress for our industry and region.

Health Safety and Environmental Excellence is a supporting pillar of the GeelongPort Business Strategy. Under this pillar, GeelongPort commits to:

- Integrating environmental sustainability throughout our business;
- Operating responsibly at all times;
- Ensuring we fulfil our compliance obligations; and
- Working towards environmental benchmarks.

GeelongPort operates within an Environmental Management System (EMS) certified to ISO14001:2015 and which incorporates the principles of EcoPorts SLC.

Significant environmental aspects identified for GeelongPort using the ISO14001:2015 framework are dust emissions, stormwater quality and water quality in Corio Bay and historical legacy land and groundwater contamination. These aspects are linked to our own operational activities, and those of our port users including tenants, as well as historic land uses. We will systematically identify and control environmental aspects using a risk-based approach based upon the ISO 31000:2018 Risk Management standard.

GeelongPort is committed to ensuring sustainable environmental management through the development of environmental outcomes in line with the four focus areas:

- Minimising resource use
- Eliminating waste and emissions
- Nurturing our port land
- Supporting an appealing and healthy Corio Bay and environs

To achieve our environmental outcomes, we are committed to:

- Working to maintain our social licence to operate;
- Engaging and collaborating actively with our workforce, tenants, port users and stakeholders;
- Ensuring compliance with all relevant legislation, regulation and other requirements to which GeelongPort subscribes and proactively supporting initiatives that go beyond compliance obligations;
- Identifying and managing material environmental risks, opportunities and impacts;
- Setting objectives, targets and management programs based on material environmental aspects including sustainable resource use, decarbonisation, environmental noise, improved air quality, climate change mitigation and adaptation, hazardous chemicals, legacy contamination, biodiversity and cultural heritage protection, and demonstration of environmental leadership;
- Measuring and reporting on our environmental performance to our internal and external stakeholders;
- Actively contributing to local environmental initiatives;
- Investing in infrastructure to prevent environmental impacts;
- Communicating to our employees the importance of effective environmental management and conforming to the EMS requirements;

Environmental Policy

- Reporting and appropriately managing all environmental hazards, incidents, community complaints and legacy conditions;
- Incorporating environmental considerations into decision-making and procurement processes;
- Ensuring effective obligations and controls are included in all commercial agreements;
- Implementing verification processes to ensure compliance with this policy and to drive continuous improvement of our environmental performance; and
- Delivering training and awareness programs to ensure our employees and contractors:
 - Understand the significant environmental aspects for GeelongPort,
 - Know their environmental accountabilities and
 - Have the necessary skills to minimise the environmental risks of our operations.

GeelongPort is committed to the continual improvement of our EMS and will maintain and resource it adequately through allocation of people, finances, assets, and knowledge. We will review the effectiveness of our EMS on an annual basis and implement actions to continuously improve both the EMS and our environmental performance and ensure the EMS meets its intended outcomes.

This policy will be reviewed every two years by the GeelongPort Leadership Team and approved by the Chief Executive Officer.



Brett Winter
CEO GeelongPort

Issued Date: April 2020

This policy is reviewed every two years and updated as required. The next review will include an additional reference to the United Nations Sustainable Development Goals as the GeelongPort Environment Strategy is already aligned against these.

1.2 Environmental Aspects and Legal Requirements

1.2.1 Environmental Aspects

GeelongPort identifies the significant environmental aspects of its activities, products and services, that it can control (Ports own activities) and over which it can be expected to have an influence (Port Users and tenants). These aspects and impacts are documented in the *GeelongPort Environmental Aspects and Impacts Register*. The procedure GP_RSK_14 *Identification and Control of Environmental Aspects and Impacts* outlines the process used to identify environmental aspects that are significant for GeelongPort.

GeelongPort assesses the risk of environmental aspects and impacts in line with the AS/NZS/ISO 31000 Risk Management standard. The risk assessment rating and the significance of the environmental impact is based upon the hazard analysis and risk assessment matrix located in procedure GP_MGT_32 *GeelongPort HSE Risk Management Requirements*. Any aspect and impact assessed as “High” or “Very High” risk is deemed as significant.

The *GeelongPort Environmental Aspects and Impacts Register* is reviewed quarterly by a cross section of the organisation including representatives from Operations, Maintenance, Infrastructure and HSEQ departments. The register is also reviewed after any significant environmental incident.

1.2.2 Legal and Other Requirements

GeelongPort has outlined the process for identifying and managing environmental legal and other requirements in GP_MGT_07 *Legal and Other Requirements*. A subscription to “EnviroLaw” is maintained and this allows for ongoing tracking of changes to existing legal requirements and the introduction of new environmental legislation. Federal and State legislation is included and is updated continuously by the services provider.

All GeelongPort employees have access to this legal register through an external website <https://m.enviroessentials.com.au/>

GeelongPort conducts an annual assessment of compliance against the legal and other requirements contained in the register. Legal and other requirements are considered when assessing the risk of environmental aspects and when determining actions to control risk. Key environmental obligations applicable to GeelongPort are presented in Table One.

Table 1: Environmental Obligations Applicable to GeelongPort

Ref	Legislation	Topics
Federal Obligations		
FL1	Biosecurity Act 2015	Biodiversity
FL2	Environment Protection and Biodiversity Conservation Act 1999	Biodiversity
FL3	Hazardous Waste (Regulation of Exports and Imports) Act 1989	Waste
FL4	National Environment Protection (Assessment of Site Contamination) Measure	Contamination
FL5	National Environment Protection (National Pollutant Inventory) Measure	Pollution, Emissions
FL6	National Environment Protection (Movement of Controlled Waste between States and Territories) Measure	Waste
FL7	National Greenhouse and Energy Reporting Act 2007	Emissions
State Obligations		
SL1	Aboriginal Heritage Act 2006	Heritage
SL2	Climate Change Act 2017	Climate Change, Emissions
SL3	Dangerous Goods Act 1985	Dangerous Goods
SL4	Environmental Effect Act 1978	Air, Water Noise, Pollution, Waste
SL5	Environmental Protection Act 1970	Air, Water Noise, Pollution, Waste
SL6	Flora and Fauna Guarantee Act 1988	Biodiversity
SL7	Planning and Environment Act 1987	Planning, Development, Environmental Protection
SL8	Pollution of Waters by Oil and Noxious Substances Act 1986	Pollution
SL9	Port Management Act 1995	Environmental Management Plans
SL10	Water Act 1989	Water
SL11	Wildlife Act 1975	Biodiversity

1.2.3 Environmental Aspect and Impact Register

Table 2 provides a summary of GeelongPort's significant environmental aspects

Table 2: GeelongPort Significant Environmental Aspects Register

Ref	Aspect	Impact	Responsible	Legal and Other Requirement	Legal Requirement	Control Measures
Operations						
O1	Dry Bulk Cargo Handling	Air quality, stormwater, noise, water quality impact to Corio Bay	General Manager, Operations Stevedores	FL5, SL5, SL9	No unlawful emissions to air Environmental noise criteria to be met Reporting of incidents	Ambient Dust Monitoring Network Dry Bulk Cargo Handling Guidelines Environmental Management Plans Dust controlled hoppers as required Continuous wharf sweeping Cargo handling inspections Stevedore Licence Environmental Officer for some cargo discharges Covered conveyors
O2	Liquid Bulk Commodity Handling	Water quality impact to Corio Bay, stormwater	General Manager, Operations Stevedores	SL3, SL5, SL9	No unlawful pollution of waters Reporting of incidents	Annual pipeline integrity testing Pressure testing of flexible hosing prior to use

Ref	Aspect	Impact	Responsible	Legal and Other Requirement	Legal Requirement	Control Measures
						<p>Standby Vacuum truck</p> <p>Sensors and alarms in acid pit</p> <p>Annual review of emergency response procedures</p> <p>Auditing/safety inspections</p>
O3	Cleaning of Wharf and Equipment	Air quality, stormwater, water quality impact to Corio Bay, biosecurity	General Manager, Operations Stevedores	FL1, FL5, SL5, SL9	<p>No unlawful emissions to air</p> <p>No unlawful emissions to water</p>	<p>Use of washbay with effluent collected in tanks for offsite reuse</p> <p>Stormwater drains blocked prior to wharf cleaning</p> <p>Stevedore Licence</p> <p>Contractor Authority to Commence Work Permit</p> <p>Regular wharf sweeping</p> <p>Environmental wharf inspections</p>
O4	Plant and Mobile Equipment use on Lascelles Wharf	Water quality impact to Corio Bay, stormwater	General Manager, Operations Stevedores	SL5, SL9	<p>No unlawful pollution of waters</p> <p>Reporting of incidents</p>	
Maintenance						
M1	Plant and Mobile Equipment use on	Water quality impact to Corio Bay, stormwater	General Manager, Maintenance	SL5, SL9	No unlawful pollution of waters	<p>Spill response container</p> <p>Portable spill kits</p>

Ref	Aspect	Impact	Responsible	Legal and Other Requirement	Legal Requirement	Control Measures
	Lascelles Wharf - spills				Reporting of incidents	Emergency management plan Pollution incident response plan
M2	Storage of Hydraulic oil associated with Woodchip loader jet slinger	Water quality impact to Corio Bay, stormwater	General Manager, Maintenance	SL3, SL5, SL9	No unlawful pollution of waters Bunding requirements Reporting of incidents	Bunding Routine maintenance/inspection Environmental inspections
Trade and Property						
TP1	Historic Land Uses	Land and groundwater contamination	General Manager, Trade and Property	FL4, SL5, SL9	No unlawful pollution to land No unlawful pollution of waters Notifiable contamination requirements	Environmental monitoring program
HSEQ						
H1	Historic operational activities	Sediment Contamination	Environment Manager	SL5, SL9	No unlawful pollution of waters Notifiable contamination requirements	Environmental monitoring program Lease and licence agreements
Tenants and Port Users						
TPU1	Tanker Transfers	Water quality impact to Corio Bay	Tenants	SL5, SL8, SL9	No unlawful pollution to waters	Port User Compliance Audits Lease and licence agreements

Ref	Aspect	Impact	Responsible	Legal and Other Requirement	Legal Requirement	Control Measures
						Site Inspections
TPU2	Hydrocarbon Storage	Land and groundwater contamination	Tenants	FL4, SL3, SL5	No unlawful pollution to land	Port User Compliance Audits Lease and licence agreements Site Inspections Annual Groundwater Monitoring Program
TPU3	Bunkering and debunkering	Water quality impact to Corio Bay	Fuel suppliers	SL5, SL8, SL9	No unlawful pollution to waters	Port User Compliance Audit Site Inspections

1.2.4 Environmental Performance Indicators

GeelongPort has identified the following environmental performance indicators relating to significant environmental aspects, the Environment Policy and key environmental objectives:

1. Annual number of environmental regulatory non-compliances
2. Annual significant environmental incidents
3. Annual number of verified community complaints
4. Annual Scope 1 and Scope 2 Greenhouse Gas emissions
5. Annual number of wildlife fatalities attributable to GeelongPort operations
6. Annual amount of solid waste diverted from landfill
7. Annual number of spills greater than 20 Litres

1.3 Responsibilities and Resources

1.3.1 GeelongPort Environmental Responsibility

Environmental Management is the responsibility of all departments and all GeelongPort employees. However, the HSEQ team employs two environmental personnel to specifically manage environmental matters. Specific environmental duties are captured in position descriptions documented for all personnel.

The GeelongPort Organisational Chart is included in Figure 2 and demonstrates the structure of the organisation and the position of identified staff.

Table 3 outlines the environmental responsibilities of key GeelongPort personnel.

Table 3: Environmental Responsibilities of Key Personnel

Environmental Responsibilities of Key Personnel		
<i>Areas for which GeelongPort has environmental responsibility, the following personnel are responsible for the identified functions</i>		
Area	Job Title	Department
Port Operations (Shipping)	General Manager Operations	Operations
Port Operations (Terminals)	General Manager Operations	Operations
Cargo Handling Operations	General Manager Operations	Operations
Strategic Business Planning	CEO	Administration
Asset Management	General Manager Engineering	Engineering
Procurement	CFO	Finance
Environmental Licencing/Permits	Environmental Manager	HSEQ
Quality Management	Quality Coordinator	HSEQ
On-site Contractor Management	Health and Safety Specialist	HSEQ
Emergency Planning	General Manager HSEQ	HSEQ
Waste Management	General Manager Operations	Operations
Environmental Document Management	Environmental Manager	HSEQ
Management System Certification	General Manager HSEQ	HSEQ
Soil Pollution Assessment	Environmental Manager	HSEQ
Air Quality Monitoring	Environmental Manager	HSEQ
Energy and Carbon Footprint Monitoring	Environmental Manager	HSEQ
Water Quality Monitoring	Environmental Manager	HSEQ
Noise Management	Environmental Manager	HSEQ
Vehicular Management of Terminal Traffic	General Manager Operations	Operations
Community Management	Corporate Affairs Manager	Corporate Affairs
Tenant Management	General Manager Trade and Property	Trade and Property

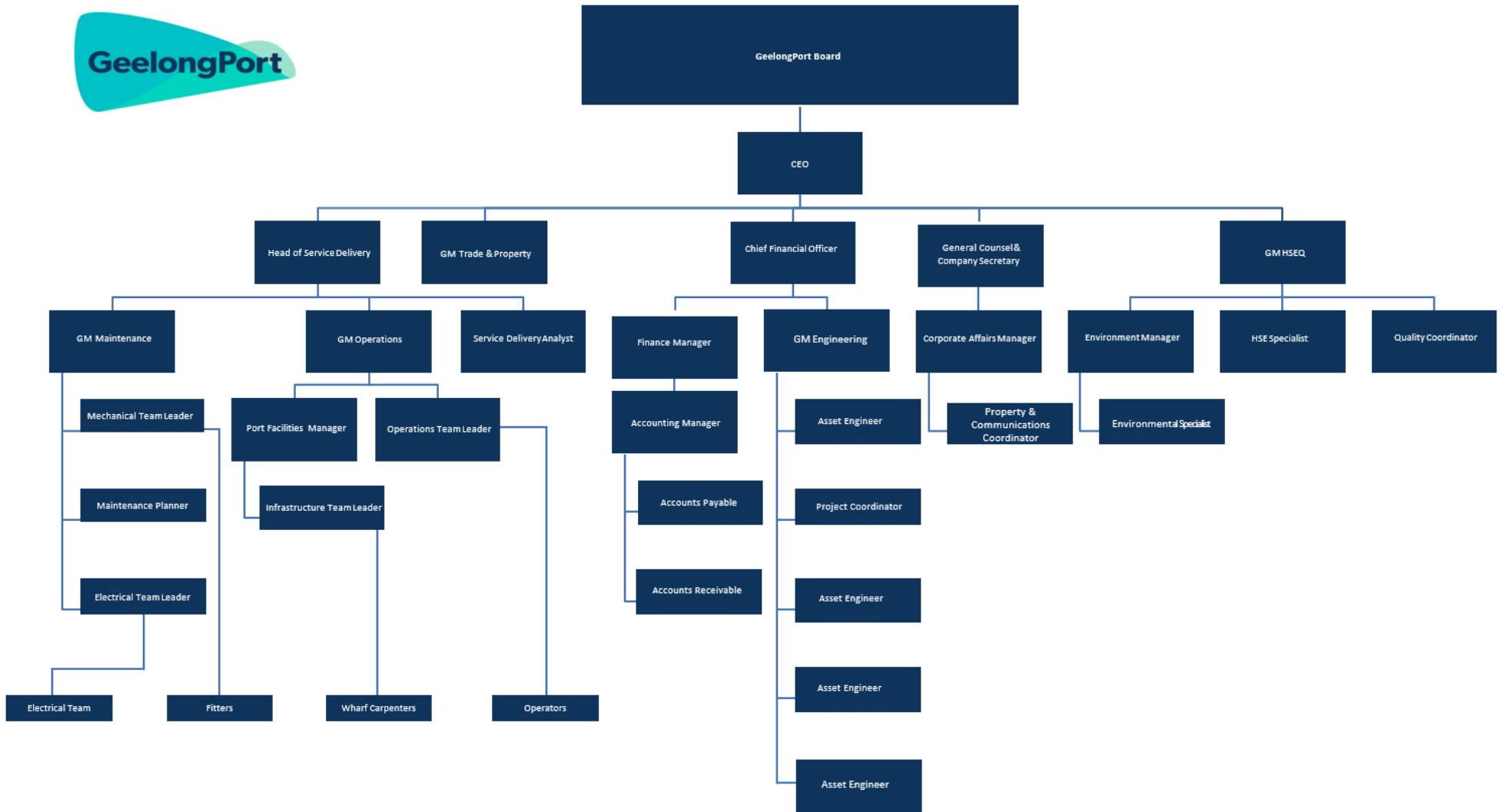


Figure 2: GeelongPort Organisational Chart

1.3.2 Environmental Training and Awareness

All GeelongPort employees have an obligation to comply with environmental legislation and GeelongPort environmental policies. In order to ensure employees are equipped to fulfil their obligations, GeelongPort provides a range of awareness, training and communication programs. Some of these include:

- Formal environmental training – i.e. EPA Prescribed Industrial Waste Driver Training
- World Environment Day education sessions run by theme experts
- Informal “Lunch and Learn” sessions. Recent topics include:
 - What is a Circular Economy?
 - Biodiversity in our Region – the endangered Burrunan Dolphin
 - Screening of “Our Planet – Our Business”
 - Dry Bulk Cargo Handling 101
 - Earthwatch Citizen Science Program – Employee presentation
 - Homeward Bound and Antarctica
- Monthly HSEQ Reports
- Quarterly Business Update including Environmental Update
- Toolbox briefings
- Quarterly Environment and Sustainability Committee Meetings

1.3.3 Environmental Resource Allocation

The GeelongPort budgeting process makes specific allocations for environmental programs and capital upgrades relating to environmental performance. Table 4 outlines a breakdown of the environmental financial allocations for FY21. Figure 2 and Table 3 outline the personnel resources allocated to GeelongPort environmental management activities.

Table 1: Environmental Financial Resource Allocation for FY21

Category	Description
Environmental Monitoring	Ambient dust monitoring network installation, surface water, sediment, soil and groundwater monitoring
Environmental Maintenance	Stormwater drain cleaning, PIW Tank emptying and disposal
Plant and Equipment	Smart water meter, hybrid hoppers with dust extraction
Emergency Response	Emergency Exercise
Environmental Training	Environmental “Lunch and Learn” sessions, World Environment Day education session, attendance at Ports Australia Sustainability, Environment and Planning Working Group meetings, EPA Prescribed Waste Driver Training
Environmental Partnerships	Partnership with the City of Greater Geelong to rehabilitate Moorpanyal Park

1.4 Conformity Review

The GeelongPort Leadership team holds an annual Management Review to assess the effectiveness of the Environmental Management System, incorporating a conformity review.

During this review, the following elements are discussed:

- Environmental Policy
- Changes in internal and external issues
- Changes in risks and opportunities
- Significant Environmental Aspects
- Objectives and targets
- System performance and effectiveness
- Opportunities for improvement

1.4.1 Review of Environmental Performance

In 2019 GeelongPort released a new 20-year Environment Strategy. The Environmental Vision contained within the strategy is for GeelongPort to be Australia’s most environmentally sustainable bulk port. The strategy contains four Focus Areas:

- Minimising resource use
- Minimising waste and emissions
- Nurturing our port land
- Supporting an appealing and healthy Corio Bay

A series of long-term objectives have been identified and these sit within each of the four focus areas, as shown in Table Five.

Table

Table 5: Environmental Objectives and Focus Areas

OBJECTIVES	MINIMISING RESOURCE USE	MINIMISING WASTE AND EMISSIONS	NURTURING OUR PORT LAND	SUPPORTING AN APPEALING AND HEALTHY CORIO BAY
No potable water used for non-potable purposes	✓			
No untreated stormwater discharges to Corio Bay		✓		✓
All energy drawn from renewable sources	✓	✓		
All carbon emissions offset		✓		
No noise generated above regulatory limits as a result of port operations		✓		✓
No dust released from port land assets		✓	✓	✓
Minimise use of materials so that waste generation is avoided wherever possible and no waste is directed to landfill	✓	✓		
No spills to the environment		✓	✓	✓
Beneficial uses of GeelongPort land are protected		✓	✓	✓
Leadership in the Geelong region’s commerce, community and environmental forums	✓	✓	✓	✓

An annual Environmental Strategy Action Plan (ESAP) is developed to determine the priority actions which will be addressed during the year. Since the release of the strategy, good progress has been made towards the following objectives:

- All energy drawn from renewable sources – a project is currently underway to secure a 100% renewable electricity supply which will eliminate all GeelongPort Scope 2 emissions
- No dust released from port land assets – there have been no community or regulator complaints received relating to dust emissions during the current reporting year
- No spills to the environment – there have been no spills greater than 20L this reporting year
- Minimise use of materials so that waste generation is avoided wherever possible and no waste is directed to landfill – currently GeelongPort is diverting 91% of waste from landfill

The Environment Policy was reviewed and updated in April 2020 to better reflect the implementation of the Environment Strategy and our drive to work towards environmental benchmarks.

GeelongPort established a full set of Environmental Key Performance Indicators for FY21 along with associated short and long term targets. The first results will be documented and reported against these KPIs at the end of the current financial year.

1.4.2 Review of Compliance with Environmental Legislation

GeelongPort is committed to ensuring compliance with all relevant legislation, regulations and other requirements to which the port subscribes. In addition to this, GeelongPort proactively supports initiatives that go beyond these compliance obligations. The procedure GP_MGT_07 *Legal and Other Requirements* outlines the process GeelongPort uses to identify and evaluate compliance requirements.

During 2020, the GeelongPort Environment Department completed a full compliance review of all environmental obligations and documented evidence of compliance as part of the site Environmental Management System. Some areas for improvement regarding record keeping were recommended, but no non-compliances were identified.

In Victoria, the Environmental Protection Authority is the main regulatory authority responsible for enforcement of environmental compliance. GeelongPort has not had any prosecutions, improvement notices or regulatory undertakings as directed by the Environmental Protection Authority.

Compliance is monitored and assured by the following additional activities:

- Dry bulk cargo handling inspections
- Trade waste quality monitoring
- Prescribed industrial waste transport inspections
- Development of project compliance obligation registers
- Monthly review of ambient dust monitoring results

1.4.3 Priorities for Improvement

Based upon the review of environmental performance, the significant environmental aspects and legal compliance, the initiatives shown in Table 6 have been determined to be GeelongPort priorities for improvement.

Table 6: GeelongPort Priorities for Improvement FY21

Focus Area	Initiative	Status
Minimising waste and emissions Nurturing our port land Supporting an appealing and healthy Corio Bay	Testing of Pollution Incident Response Management Plan	Annual activity – complete for FY21
Minimising waste and emissions	Improved method of estimating carbon emissions from shipping activities	Partially complete Expected completion Q1 2021
Minimising waste and emissions Nurturing our port land Supporting an appealing and healthy Corio Bay	Port User (Tenant and Licence Holder) Compliance Audit Program	Partially complete
Minimising waste and emissions Nurturing our port land Supporting an appealing and healthy Corio Bay	Installation of Ambient Dust Monitoring Network	Partially complete Expected completion Q1 2021
Minimising waste and emissions Supporting an appealing and healthy Corio Bay	Equipment Cleaning Wastewater Capture project	Phase 1 Expected completion Q4 2020
Minimising waste and emissions Nurturing our port land Supporting an appealing and healthy Corio Bay	Dry Bulk Cargo Handling Improvements	Ongoing
Minimising waste and emissions Nurturing our port land Supporting an appealing and healthy Corio Bay	Detailed Site Investigation – soil and groundwater assessments	Partially complete Expected completion Q2 2021

1.5 Environment Report

A copy of this PERS report will be made available on the GeelongPort public website at www.geelongport.com.au. This report will be reviewed and updated every two years.

Environmental performance information is also incorporated into other communications methods such as at Community Liaison Group meetings, the public website and a quarterly internal environment report.

1.5.1 Environmental Performance FY21

Table 7: GeelongPort Environmental Performance FY21

Performance Indicator	Metric	Performance FY21 YTD
Environmental Compliance	Zero non-compliances with environmental laws and regulations	Currently on track to meet target
Air Emissions	No dust emissions above trigger limits	Data pending
GHG Emissions	Reduce Scope 1 and Scope 3 emissions by 50% by 2030 from a 2018 base year	Currently on track to meet target
Energy	5% reduction in electricity consumption by 30 June 2020 from a FY19 base year	Currently on track to meet target
Water	5% reduction in potable water use intensity by 30 June 2021 from a FY19 base year	Potable water use intensity is currently tracking about target. Capital project underway to reduce water consumption.
Waste	75% of solid waste diverted from landfill by 30 June 2021 from a FY19 base year	Currently on track to meet target
Biodiversity	Zero wildlife fatalities Ratio of habitat restored and protected to habitat removed > 1	Currently on track to meet target
Hazardous Chemicals	Zero spills greater than 20L Zero high risk chemicals used on site	Currently on track to meet target
Stakeholder Engagement	Zero verified community complaints Four Environment and Sustainability Committee Meetings held per year	Currently on track to meet target

1.5.2 Port Stakeholder Needs, Expectations and Engagement

Table 8: Key GeelongPort stakeholders, their needs and expectations and engagement methods

Stakeholder	Needs and Expectations	Engagement
Employees	Safe and sustainable operations.	Daily toolbox meetings Quarterly environment report Quarterly CEO Business Briefings GeelongPort Intranet Quarterly Environment and Sustainability Committee Meetings
Contractors	Safe and efficient access to port.	Authority to Commence Work process Daily toolbox meetings Public website
Port Tenants	Safe and efficient access to land and associated wharf side infrastructure. Connectivity to road and rail infrastructure. Access to utilities.	Port User Group Meetings Public website
Port Customers/Port Users	Safe and efficient operations. Connectivity to road and rail infrastructure.	Port User Group Meetings Public website Pre- and Post-discharge meetings
Regulators	Compliant, safe and sustainable operations. Managed community impacts. Protection and enhancement of biodiversity.	Annual reporting Meetings, site visits and audits Public website
Community	Safe and sustainable operations. Managed environmental impacts including noise, air quality and water quality	Community Liaison Group Online Stakeholder Engagement Platform Public website
Vessel operators	Suitable wharf side infrastructure including waste reception facilities, potable water and shore leave provisions	Public website Via shipping agents and Victorian Regional Channels Authority

1.6 Best Practices

This section provides information on two best practices delivered by GeelongPort which demonstrate the port's ability to deliver environmental protection and sustainable development.

Table 9: Best Practice 1

GeelongPort	Australia
Contact	Dr Lisa Mills
Position	Environment Manager
Email	enquiries@geelongport.com.au
Environmental Issue	Climate change (Energy efficiency, GHG emissions reduction & Adaptation)
Relevance to ESPO 5 E's Framework	Exemplify
Title: Emissions reduction targets approved by The Science Based Targets initiative	
Description: GeelongPort has become the first port in Australia to make the voluntary commitment to reduce our greenhouse gas emissions in line with a 1.5°C warming scenario as part of The Science Based Targets initiative. The commitment includes reducing Scope 1 and Scope 2 emissions by 50% by 2030 and monitoring and reducing Scope 3 emissions. These targets are directly linked to the outcomes and objectives in our environment strategy and will help us to achieve our environmental vision "To be Australia's most environmentally sustainable bulk port".	
Link: https://sciencebasedtargets.org/companies-taking-action/	

Table 2: Best Practice 2

GeelongPort	Australia
Contact	Dr Lisa Mills
Position	Environment Manager
Email	enquiries@geelongport.com.au
Environmental Issue	Climate change (Energy efficiency, GHG emissions reduction & Adaptation)
Relevance to ESPO 5 E's Framework	Encourage / Engage
Title: Citizen Science Program at GeelongPort	
Description: GeelongPort has established a Citizen Science Program where employees join leading scientists on field research expeditions that tackle critical environmental challenges from climate change to ocean health and more. In addition to building environmental capacity, the program aims to improve employee engagement and provide a hands-on, team-building experience. During 2019 employees joined two Earthwatch Institute expeditions to further expand their understanding of the global climate change issue and the impact climate change is having on some of our most precious environments.	

Two employees joined the “Recovery of the Great Barrier Reef” expedition to learn more about the threats facing the Great Barrier Reef, including climate change, storm damage, sedimentation and nutrient runoff.

Four employees joined Earthwatch Institute and The Blue Carbon Lab program “Blue Carbon – Counteracting Climate Change” expedition to learn more about the role that mangroves, wetlands and salt marsh play in sequestering carbon and providing value through ecosystem services.

The knowledge gained through these experiences has been shared with the GeelongPort team when participants return home through informal “Lunch and Learn” sessions.

Link: <https://www.abc.net.au/news/2019-10-30/coral-babies-deployed-in-algae-war-on-great-barrier-reef/11650614>

Illustrations:



Figure 1: GeelongPort employees visit the Australian Institute of Marine Science



Figure 2: GeelongPort employee removing a mangrove soil core sample

1.7 Contact Information

Contact:	Dr Lisa Mills
Position Title:	Environment Manager
Telephone Number:	03-5247 0200
Email Address:	enquiries@geelongport.com.au
Website	www.geelongport.com.au

GeelongPort

